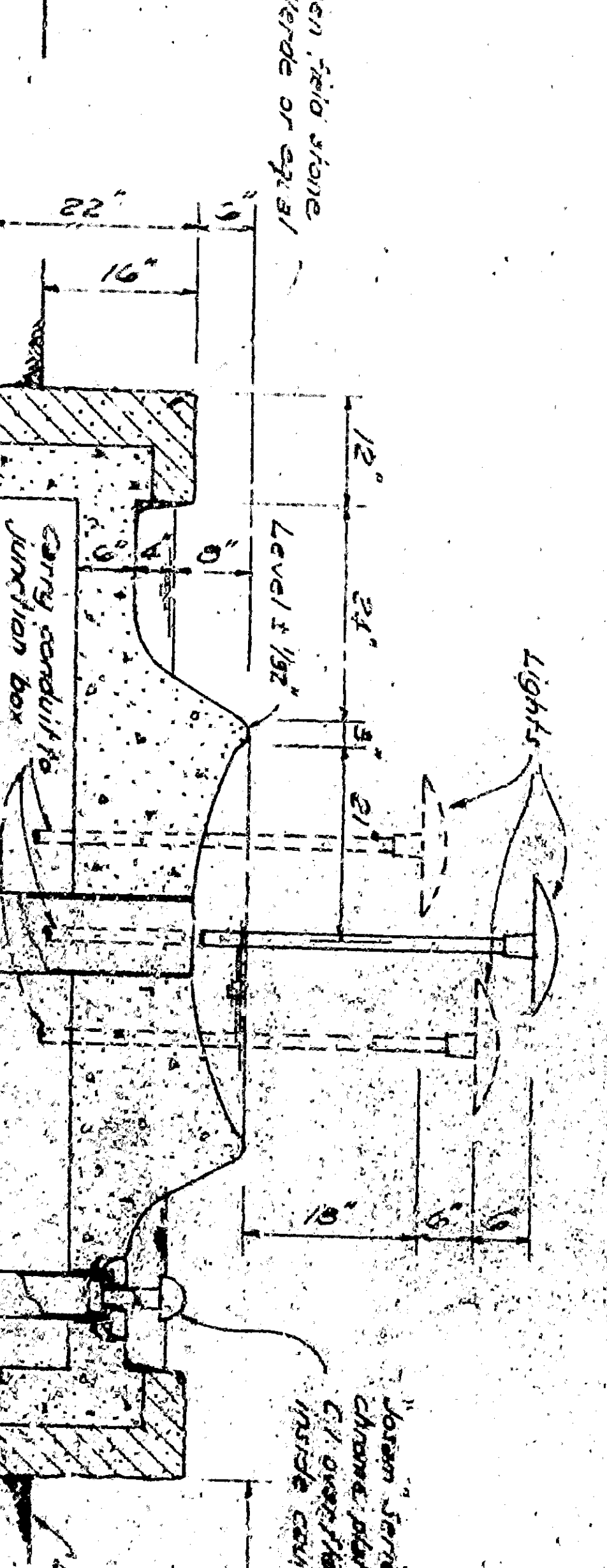
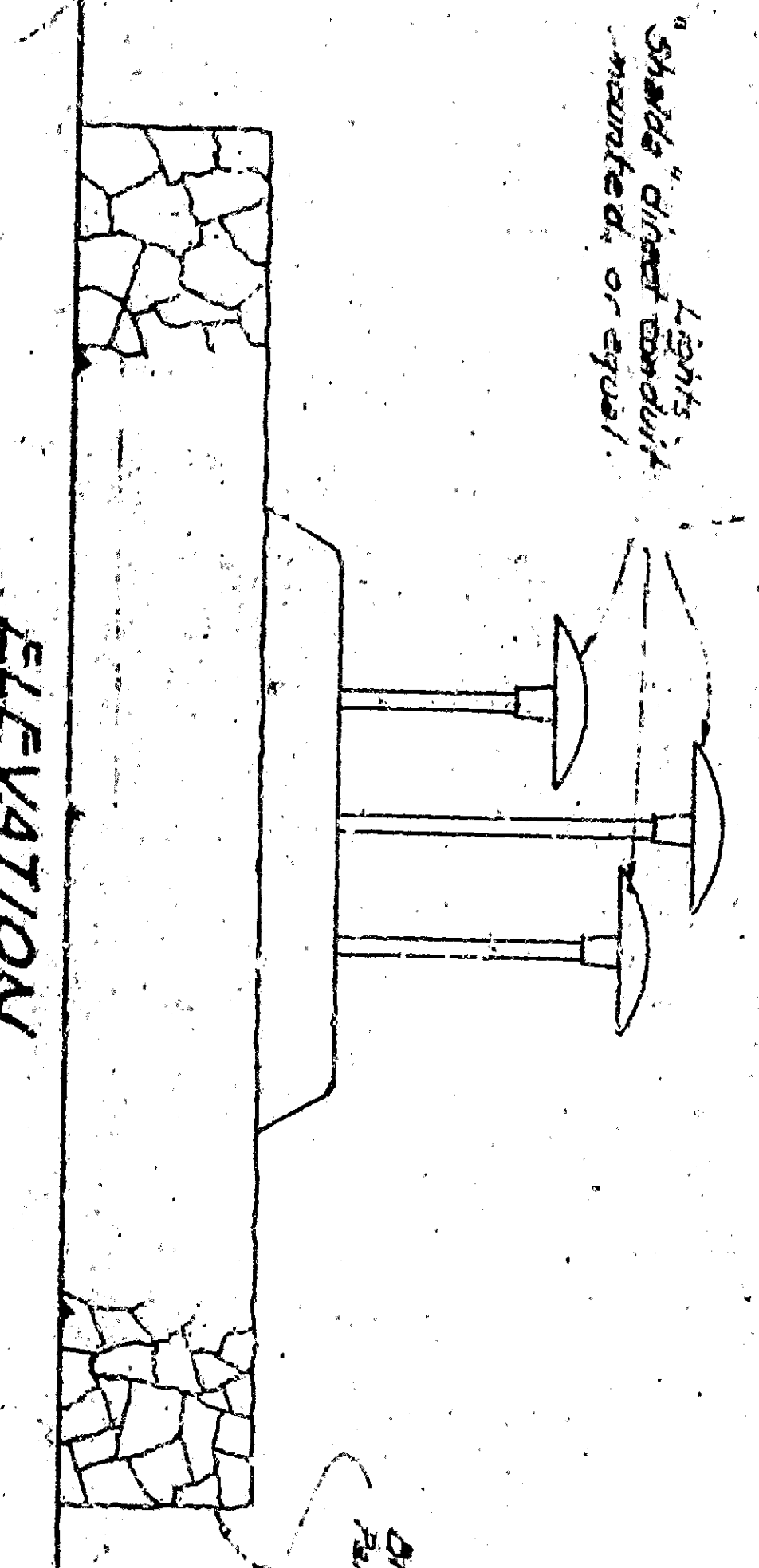
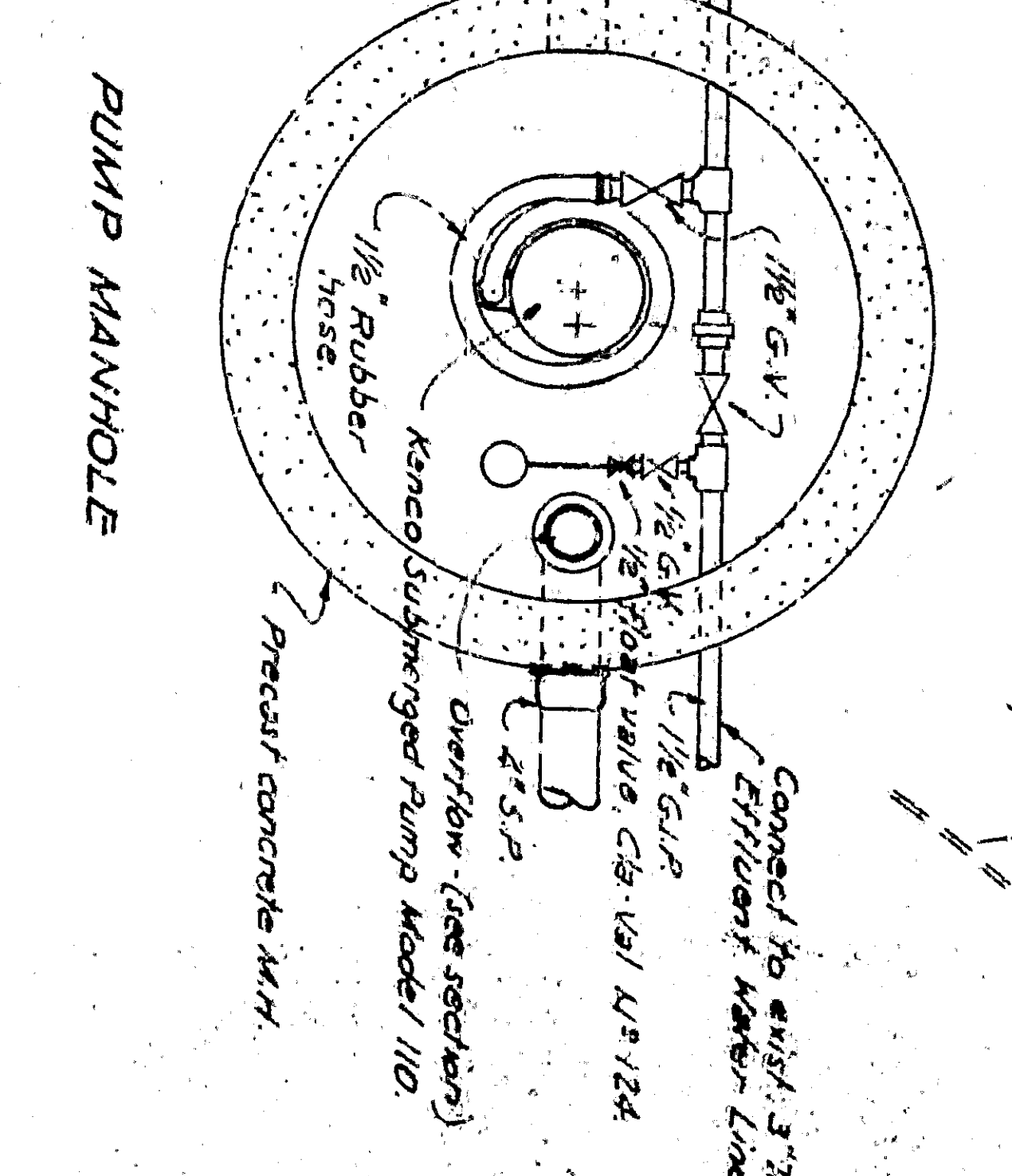
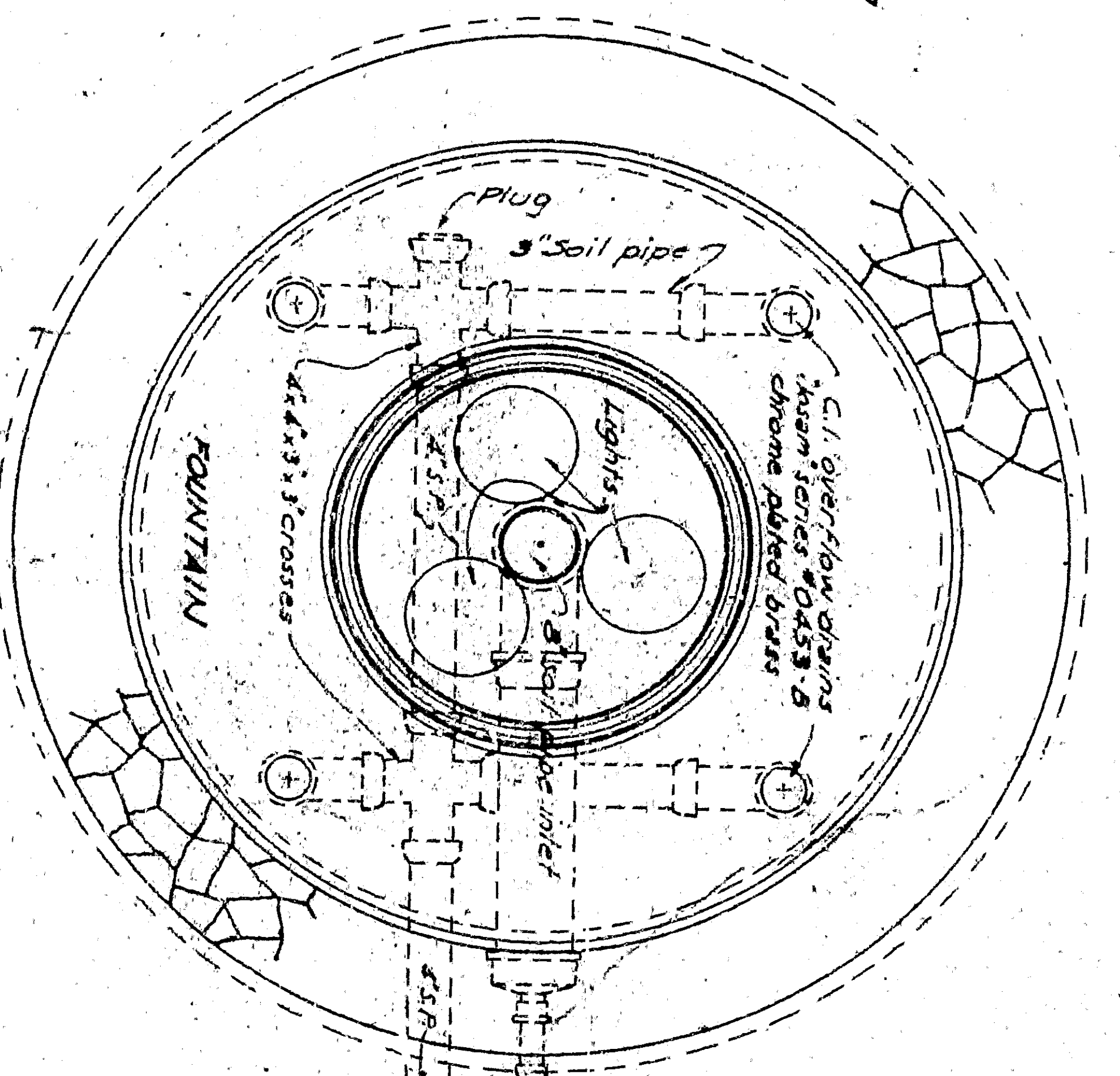
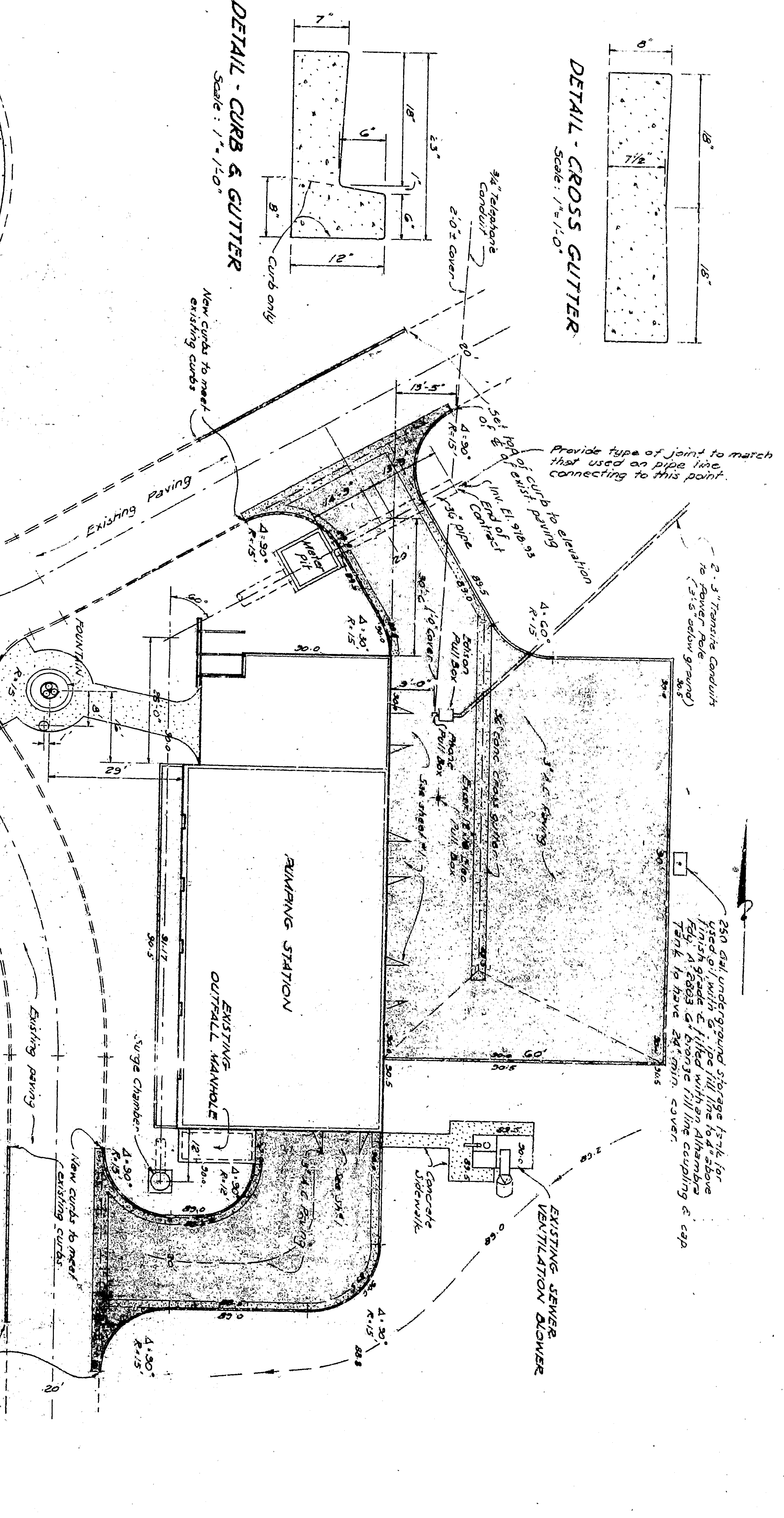
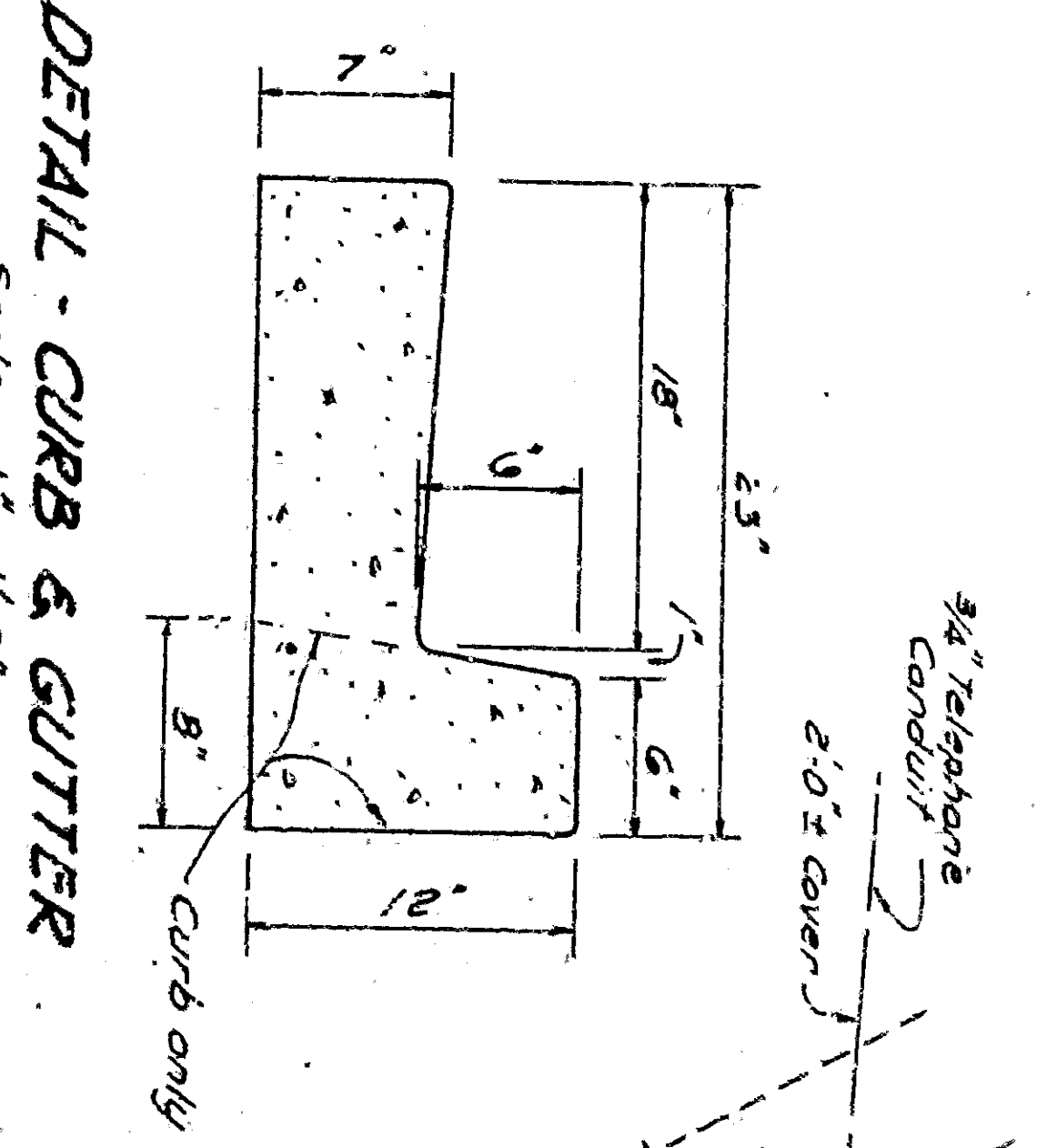
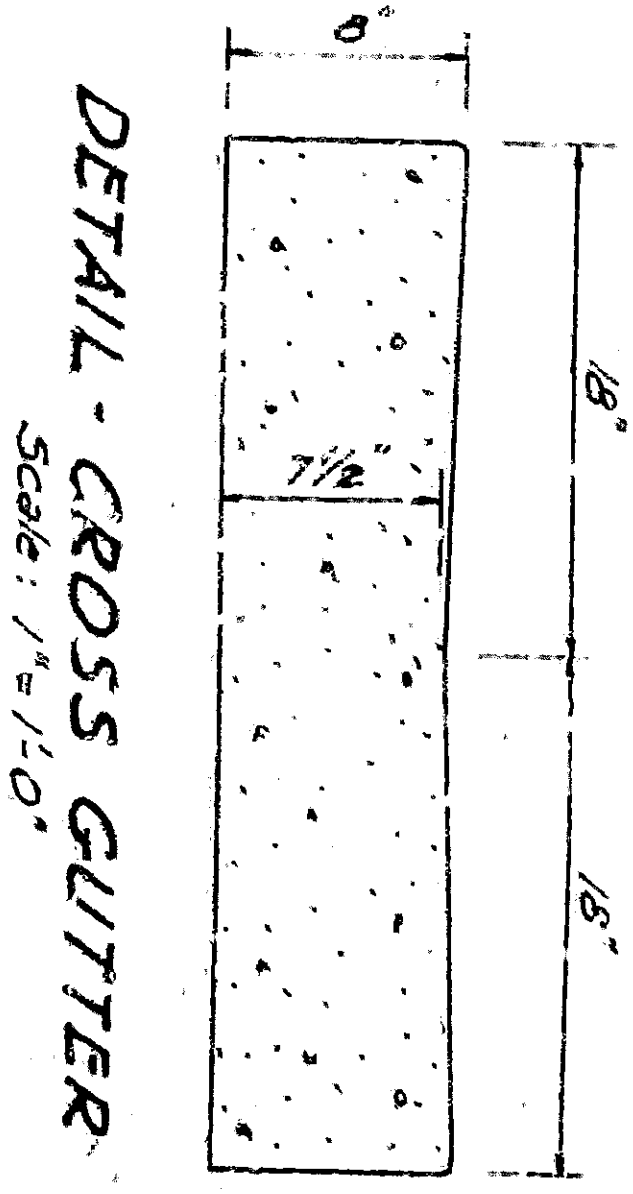


CONSTRUCTION NOTES
 All reinforced hollow unit masonry (concrete base) construction shall be in strict accordance with the requirements of the Uniform Building Code. All walls shall be laid true and plumb. Block and mortar joints shall be 3/8" thick, straight, clean and uniform and joints shall be laid in a staggered pattern. Mortar shall be in accordance with the specifications shown on plans.



EFFLUENT RECLAMATION PUMPING STATION SAN BERNARDINO CALIFORNIA
 CONTRACT NO. 1983-1
 SAN BERNARDINO COUNTY WATERWORKS DEPARTMENT